
Walcombe House Look Book

January 2025



SHERBOURNE
DEVELOPMENTS

Our Look Book offers a glimpse into the stunning architectural interiors envisioned for Walcombe House, sparking ideas for how these exceptional spaces can come to life. While it serves as your guide, the sales specification document and particulars provide a precise reflection of the meticulously chosen finishes and the thoughtfully crafted design of the house. By purchasing prior to completion, you unlock the unique opportunity to personalize your future home. Many elements can be tailored in collaboration with the Sherbourne Team, allowing you to create a space that truly reflects your individuality and style. Together, we can bring your vision to life in a home that is as unique as you are



Ground Floor

Look & Feel



All imagery is for inspiration and illustrative purposes only from previous Sherbourne projects and other sources. Exact specification is subject to change and detailed in the full specification document at time of sale.



Joinery Spaces

Look & Feel - Kitchen, Boot Room, Utility

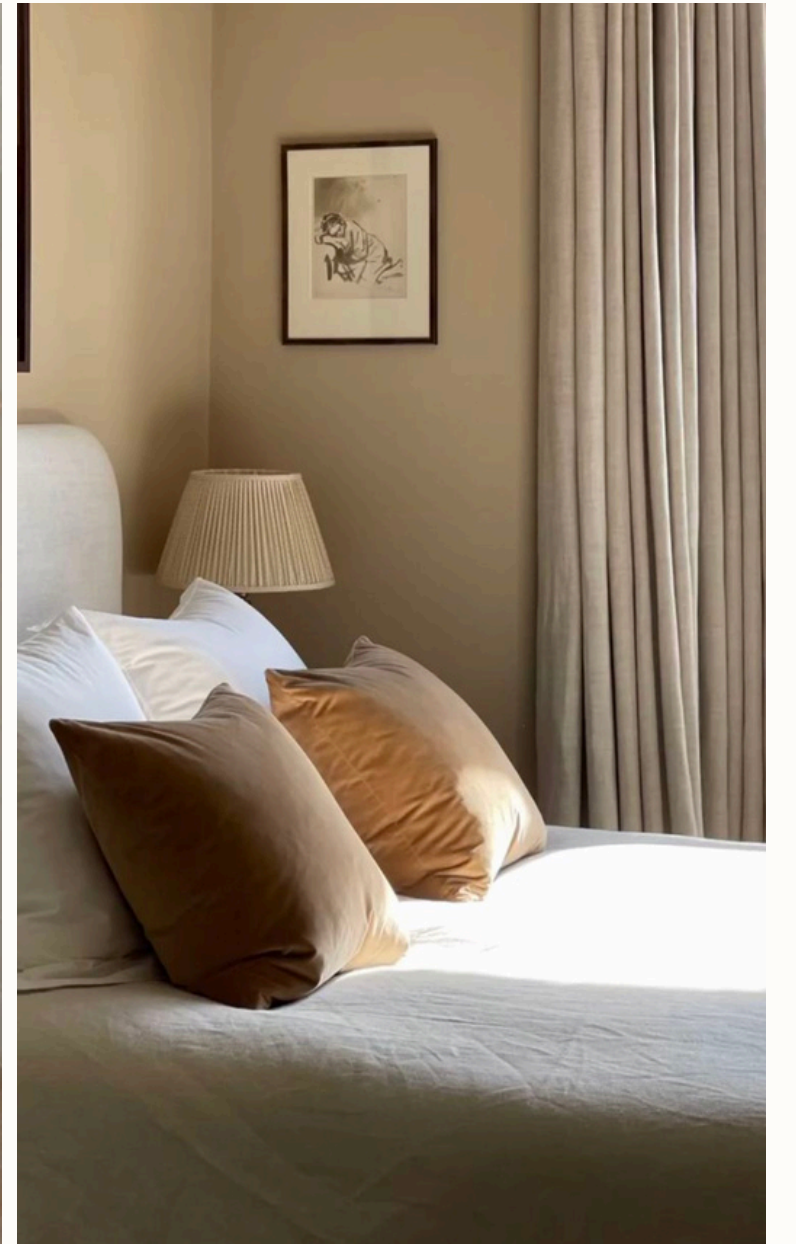


All imagery is for inspiration and illustrative purposes only from previous Sherbourne projects and other sources. Exact specification is subject to change and detailed in the full specification document at time of sale.



First Floor

Look & Feel

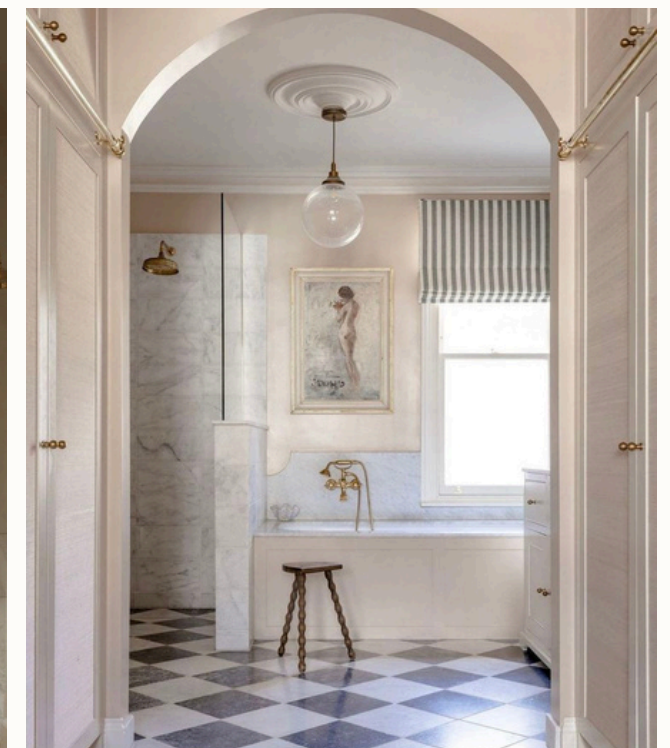


All imagery is for inspiration and illustrative purposes only from previous Sberbourne projects and other sources. Exact specification is subject to change and detailed in the full specification document at time of sale.



Bathrooms

Look & Feel



All imagery is for inspiration and illustrative purposes only from previous Sherbourne projects and other sources. Exact specification is subject to change and detailed in the full specification document at time of sale.



Architectural Details

Look & Feel



All imagery is for inspiration and illustrative purposes only from previous Sberbourne projects and other sources. Exact specification is subject to change and detailed in the full specification document at time of sale.

